

MULTI-COMPRESSOR CONDENSERS

2 x 9000 / 2 x 12000 / 3 x 12000 / 2 x 18000 / 2 x 12000 + 1 x 24000 BTU

HIGHLIGHTS

*COMPACT FLOOR-CEILING CONSOLE
12000/18000/24000 BTU



*CASSETTE
12000/18000/24000 BTU



*HIGHWALLS
9000/12000/18000/24000 BTU



*DUCTED
AIR HANDLER
24000 BTU



*OEM HIGHWALLS
10000/12000/18000/24000 BTU



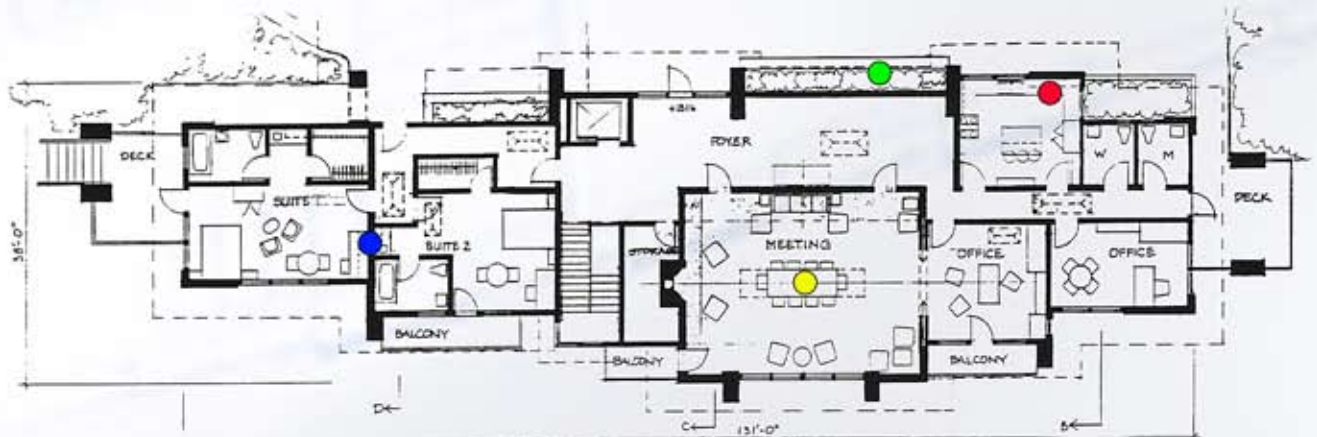
*FAN-COIL
12000/18000/24000 BTU



*FLOOR-CEILING CONSOLE
12000/18000/24000 BTU



- Quiet
- High Quality
- Compact cabinet
- Independent circuits
- * Mix and match with optional shown units



MULTI-COMPRESSOR CONDENSERS

2 x 9000 / 2 x 12000 / 3 x 12000 / 2 x 18000 / 2 x 12000 + 1 x 24000 BTU

SPECIFICATIONS

MODEL		H2x09C2MR1	H2x12C2MR1	H3x12C2MR1	H2x18C2MR1	H2x12+24C2MR1
CAPACITY	Nominal (BTU)	18,000	24,000	36,000	36,000	48,000
EFFICIENCY	SEER	11.3	11.1	10.8	11.1	11.1
ELECTRICAL	Voltage-Phase-Hertz	208 / 230 - 1 - 60				
	Range (volts)	187 ~ 242				
	Watts (in)	920 x (2)	1250 x (2)	1250 x (3)	1950 x (2)	1250 x (2) + 2520
AMPS	Nominal (amps)	4.2 x (2)	5.9 x (2)	5.9 x (3)	8.9 x (2)	5.9 x (2) + 11.5
NOISE LEVEL	(dba)	53	55	55	58	60
REFRIGERANT	Type	R 22				
	Charge (oz)	25 x (2)	34 x (2)	34 x (3)	53 x (2)	34 x (2) + 64
	Type	Capillary Tube				
REFRIGERANT CONNECTIONS	Flare/Sweat	Flare				
	Liquid (in)	1/4 x (2)	1/4 x (2)	1/4 x (3)	1/4 x (2)	1/4 x (2) + 3/8
	Suction (in)	3/8 x (2)	3/8 x (2)	3/8 x (3)	1/2 x (2)	3/8 x (2) + 5/8
LENGTH OF PIPES	Vertical (max ft)	13 ~16	13 ~16	13 ~16	13 ~16	13 ~16
	Horizontal (max ft)	50	50	50	50	50 x (2) + 60
UNIT DIMENSIONS	Height (in)	24	24	33½	33	49
	Width (in)	33½	33½	37½	33½	36½
	Depth (in)	11½	11½	13½	13½	15½
NET WEIGHT	(lbs)	115	122	216	159	320
CARTON BOX DIMENSIONS	Height (in)	27¼	27¼	37½	36	55¼
	Width (in)	39½	39½	43½	38½	43½
	Depth (in)	16¼	16¼	17½	16½	20½
GROSS WEIGHT	(lbs)	124	133	234	172	353

- Specifications are subject to change without notice.
- The cooling capacities shown are nominal values based on the standards ARI 210/240: (air Entering) Outdoor unit: 95 °f DB, 75 °f WB, Indoor Unit: 80 °f DB, 67 °F WB. Chosen installation area may affect cooling performance.
- Always consult equipment nameplate for exact electrical requirements.