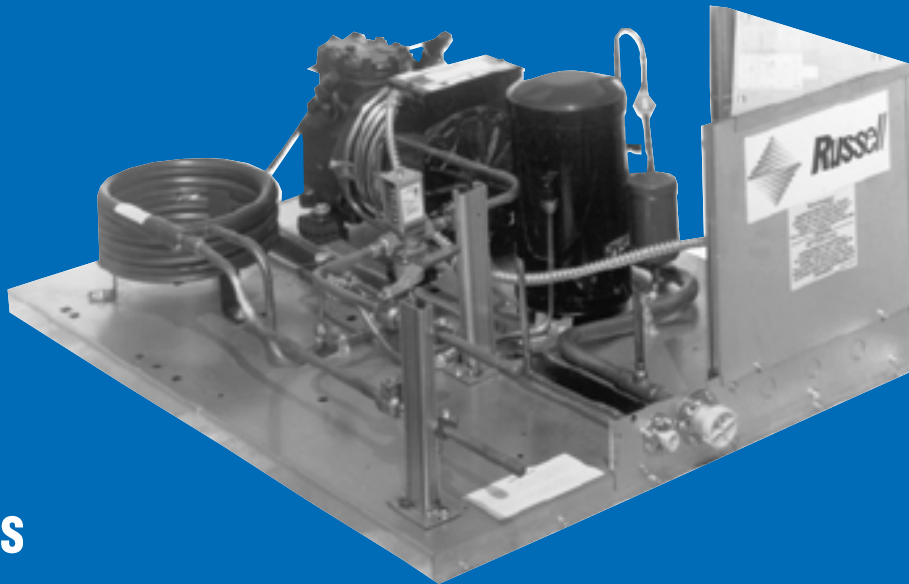


# **WATER COOLED CONDENSING UNITS 1/2 THROUGH 6 H.P.**

**Publication 503.2  
January 1998**



The MW series of indoor water cooled condensing units are designed to be compact, yet easy to install and service. A full selection of standard and optional features are available in this series of condensing units. A choice of a high efficiency Discus, durable Semi-hermetic, or economical Hermetic compressors, using R-22 or R-404A refrigerant, are available to meet a variety of needs. These units are base mounted and are designed to fit through door openings. They are available in 230/1, 230/3 or 460/3. All models are UL and CUL listed.

### **Standards Features:**

- Discus, Semi-hermetic reed, or Hermetic compressor
- Suction and discharge service valves (as required)
- Dual pressure control
- Oil failure control (as required)
- Compressor head cooling fan (as required)
- Large receiver with isolation valve(s)
- Coaxial water cooled condenser
- Large electrical control panel
- Compressor contactor and control circuit fusing
- UL and CUL listed

### **Optional Features:**

- Cleanable condenser
- Liquid line assembly (sight glass and filter)
- Suction line assembly (filter and vibration absorber)
- Discharge vibration absorber (standard on 3 to 6 HP)
- Defrost provisions
- Water regulating valve
- Two tier stacking rack

## PERFORMANCE @ 105° F CONDENSING TEMPERATURE

COMP. TYPE	REF. TYPE	MODEL NUMBER	NOM H.P.	CAPACITY (BTUH) AT SUCTION TEMPERATURE (°F)										GPM & PSI @ Highest Evap. Rating	
														85° Ewt.	
				40°	30°	25°	20°	10°	0°	-10°	-20°	-30°	-40°	Gallons per Minute	Press. Drop (P.S.I.)
H E R M E T I C	MED TEMP 404A	MWH050M44	0.50	---	---	6300	5500	4060	2950	2100	---	---	---	2.2	1.4
		MWH075M44	0.75	---	---	9900	8700	6790	5190	3770	1600	---	---	2.7	3.1
		MWH101M44	1.00	---	---	13320	11850	9230	6970	4980	3200	---	---	5.0	3.6
		MWH150M44	1.50	---	---	17440	15280	11500	8330	5640	---	---	---	5.0	3.6
		MWH201M44	2.00	---	---	25900	22990	17600	12730	8350	---	---	---	6.6	5.0
		MWH300M44	3.00	---	---	29380	25510	19120	14130	10050	---	---	---	10.6	7.9
	LOW TEMP 404A	MWH400M44	4.00	---	43570	38580	33790	24930	17330	11300	7160	---	---	11.6	6.3
		MWH500M44	5.00	---	50840	44990	39640	30320	22580	16150	---	---	---	15.0	5.1
		MWH050L44	0.50	---	---	---	5500	4060	2950	2100	1450	---	---	2.3	1.5
		MWH075L44	0.75	---	---	---	8700	6800	5200	3750	2030	---	---	3.3	3.7
	HIGH TEMP 22	MWH100L44	1.00	---	---	---	11800	9220	6960	4980	2350	---	---	3.9	6.8
		MWH150L44	1.50	---	---	---	---	14600	11400	8550	6010	3930	2350	4.2	7.0
		MWH200L44	2.00	---	---	---	---	23700	17200	12450	8816	6040	3690	6.0	3.9
		MWH300L44	3.00	---	---	---	39600	30300	22570	16150	10750	---	---	6.1	4.7
MWH050H22		0.50	6380	5020	4430	3890	2960	2240	---	---	---	---	2.2	1.4	
MWH075H22		0.75	9790	7740	6830	5980	4460	3090	---	---	---	---	2.7	3.1	
MWH100H22		1.00	14220	11310	10020	8810	6600	4550	---	---	---	---	3.5	5.9	
S E M I - H E R M E T I C	MED TEMP 404A	MWS050M44	0.50	---	---	5300	4800	3700	2800	---	---	---	---	1.5	0.9
		MWS100M44	1.00	---	---	9900	9000	7200	5600	---	---	---	---	2.2	2.8
		MWS200M44	2.00	---	---	16400	14500	11600	9200	---	---	---	---	6.2	4.9
		MWS300M44	3.00	---	---	30000	26800	21100	16400	---	---	---	---	6.6	3.5
		MWS400M44	4.00	---	---	41500	36700	28400	21400	---	---	---	---	10.9	5.6
	HIGH TEMP 22	MWS050H22	0.50	6130	4840	4280	3770	2900	2210	---	---	---	---	1.8	1.2
		MWS075H22	0.75	9460	7430	6540	5720	4270	3050	---	---	---	---	2.7	3.1
		MWS100H22	1.00	12800	10270	9150	8130	6340	4890	---	---	---	---	3.2	5.1
		MWS150H22	1.50	16620	13330	11850	10480	8040	5950	---	---	---	---	4.1	2.4
		MWS200H22	2.00	22600	18200	16200	14400	11100	7880	---	---	---	---	6.2	4.9
		MWS300H22	3.00	36700	29400	26200	23200	17900	13600	---	---	---	---	11.0	8.4
		MWS400H22	4.00	56700	44400	39200	34300	25500	17800	---	---	---	---	10.9	5.6
	LOW TEMP 404A	MWS400M22	4.00	---	---	32800	29400	23100	17400	---	---	---	---	10.9	5.6
		MWS500H22	5.00	64400	51400	45600	40200	30800	22900	---	---	---	---	13.6	6.2
MWS500M22		5.00	---	---	55100	49000	38300	29800	---	---	---	---	13.6	6.2	
MWS050L44		0.50	---	---	---	---	---	3600	2700	1900	1200	710	0.7	0.4	
MWS075L44		0.75	---	---	---	---	---	5800	4300	3100	2200	1390	1.8	1.2	
MWS100L44		1.00	---	---	---	---	---	7800	6000	4500	3200	2210	1.6	1.4	
MWS150L44		1.50	---	---	---	---	---	11400	8900	6700	4900	3550	2.0	2.4	
LOW TEMP 22	MWS200L44	2.00	---	---	---	---	---	15400	11800	8800	6300	4270	3.8	6.8	
	MWS250L44	2.50	---	---	---	---	---	17900	13300	9600	6500	3840	6.1	4.7	
	MWS300L44	3.00	---	---	---	---	---	25600	18870	13550	9140	5670	6.1	4.7	
	MWS050L22	0.50	---	---	---	---	---	3430	2480	1680	1030	536	1.1	0.6	
	MWS075L22	0.75	---	---	---	---	---	5430	4070	2960	2030	1270	1.9	1.2	
	MWS100L22	1.00	---	---	---	---	---	7200	5460	4000	2820	1920	2.1	2.1	
LOW TEMP 22	MWS200L22	2.00	---	---	---	---	---	8350	6180	4500	3190	2130	1.8	2.1	
	MWS201L22	2.00	---	---	---	---	---	11800	8770	6260	4200	2540	3.4	5.7	
	MWS202L22	2.00	---	---	---	---	---	14800	12900	7800	5350	3800	4.6	6.8	
	MWS300L22	3.00	---	---	---	---	---	23000	17200	12000	7960	5270	5.3	3.7	
	404A	MWD500M44	5.00	77200	62600	56000	49800	39100	---	---	---	---	---	17.4	9.8
LOW TEMP 404A	MWD300L44	3.00	---	---	---	---	---	32800	25300	19000	13900	9570	6.0	3.0	
	MWD400L44	4.00	---	---	---	---	---	39200	30400	23100	17000	11890	8.1	5.0	
	MWD500L44	5.00	---	---	---	---	---	44300	34700	26600	19900	14090	8.8	3.9	
	22	MWD500H22	5.00	73400	58900	52500	46600	36000	---	---	---	---	---	16.2	7.3
	LOW TEMP 22	MWD300L22	3.00	---	---	---	---	---	30200	22100	16000	11200	7180	7.2	5.9
LOW TEMP 22	MWD400L22	4.00	---	---	---	---	---	---	35400	26700	19300	13300	8660	6.4	3.4
	MWD500L22	5.00	---	---	---	---	---	---	41200	31000	22500	15600	10200	12.1	6.8

## ELECTRICAL DATA

COMP. TYPE	REF. TYPE	MODEL NUMBER	COMPR. MODEL	AMPS @ 230/1/60 *			AMPS @ 208/230/3/60			AMPS @ 460/3/60			
				COMPRESSOR		TOTAL UNIT**	COMPRESSOR		TOTAL UNIT**	COMPRESSOR		TOTAL UNIT**	
				RLA	LRA		RLA	LRA		RLA	LRA		
H E R M E T I C	MED TEMP 404A	MWH050M44	RS43C1E	5.4	24.1	6.4	---	---	---	---	---	---	
		MWH075M44	RS70C1E	7.0	34.2	8.0	4.7	31.0	5.7	---	---	---	
		MWH101M44	RS97C1E	11.0	51.0	12.0	7.0	35.0	8.0	---	---	---	
		MWH150M44	CS12K6E	10.9	56.0	11.9	7.5	51.0	8.5	---	---	---	
		MWH201M44	CS18K6E	16.0	82.0	17.0	10.4	65.5	11.4	---	---	---	
		MWH300M44	CS20K6E	18.0	96.0	19.0	11.4	75.0	12.4	---	---	---	
	M E T	LOW TEMP 404A	MWH400M44	CS27K3E	23.9	95.4	24.9	15.3	82.0	16.3	---	---	---
			MWH500M44	CS33K3E	30.7	125.0	31.7	20.7	90.0	21.7	8.6	45.0	9.1
			MWH050L44	RS43C1E	5.4	24.1	6.4	---	---	---	---	---	---
			MWH075L44	RS70C1E	7.0	34.2	8.0	4.7	31.0	5.7	---	---	---
			MWH100L44	RS97C1E	11.0	51.0	12.0	7.0	35.0	8.0	---	---	---
	T I C	HIGH TEMP 22	MWH150L44	AH2465	10.7	75.0	11.7	6.0	47.0	7.0	---	---	---
			MWH200L44	AH2490	---	---	---	8.1	65.0	9.1	3.8	27.0	4.8
			MWH300L44	CS33K3E	30.7	125.0	31.7	20.7	90.0	21.7	8.6	45.0	9.6
			MWH050H22	JRE-0050	5.4	24.1	6.4	---	---	---	---	---	---
			MWH075H22	RSE-0075	7.0	34.2	8.0	---	---	---	---	---	---
			MWH100H22	REK-0125	7.0	34.2	8.0	4.7	31.0	5.7	---	---	---
			MWH150H22	CRA-0150	10.8	48.0	11.8	9.3	58.0	10.3	---	---	---
M E T I C	HIGH TEMP 22	MWH200H22	CRD-0200	13.4	59.0	14.4	8.7	50.0	9.7	---	---	---	
		MWH300H22	CRK-0325	23.9	95.4	24.9	15.3	82.0	16.3	7.7	41.0	8.2	
		MWH400H22	CRM-0400	30.7	125.0	31.7	17.9	90.0	18.9	8.6	45.0	9.1	
		MWH500H22	CRN-0500	34.3	142.0	35.3	21.4	130.0	22.4	9.6	50.0	10.1	
		MWS050M44	HAI-005E	3.7	22.0	4.7	2.2	13.0	3.2	---	---	---	
		MWS100M44	KAR-010E	7.4	40.0	8.4	4.3	27.0	5.3	---	---	---	
S E M I - H E R M E T I C	MED TEMP 404A	MWS200M44	KAK-020E	10.6	55.0	11.6	6.8	50.0	7.8	---	---	---	
		MWS300M44	ERF-031E	---	---	---	12.4	82.0	13.4	5.8	41.0	6.3	
		MWS400M44	NRB-040E	---	---	---	21.8	141.0	22.8	9.0	62.5	9.5	
		MWS050H22	HAG-0050	4.4	22.0	5.4	2.4	13.0	3.4	---	---	---	
		MWS075H22	KAN-0075	6.1	36.0	7.1	3.5	19.9	4.5	---	---	---	
	HIGH TEMP 22	MWS100H22	KAR-0100	7.4	40.0	8.4	4.3	27.0	5.3	---	---	---	
		MWS150H22	KAG-0150	9.6	55.0	10.6	5.5	35.5	6.5	---	---	---	
		MWS200H22	KAK-0200	10.6	55.0	11.6	6.8	50.0	7.8	---	---	---	
		MWS300H22	ERF-0310*	17.0	86.0	*18.0	11.7	82.0	12.7	6.4	41.0	6.9	
		MWS400H22	NRB-0400	---	---	---	21.8	141.0	22.8	11.3	62.5	11.8	
		MWS400M22	3RA-0311	---	---	---	13.1	82.0	14.1	6.3	41.0	6.8	
		MWS500H22	NRA-0500	---	---	---	19.2	141.0	20.2	9.6	62.5	10.1	
	M E T I C	LOW TEMP 404A	MWS500M22	NRM-0500	---	---	---	24.3	141.0	25.3	12.1	62.5	12.6
			MWS050L44	KAN-005E	3.6	24.0	4.6	2.2	13.2	3.2	---	---	---
			MWS075L44	KAM-007E	5.6	36.0	6.6	3.2	19.9	4.2	---	---	---
			MWS100L44	KAJ-010E	6.9	40.0	7.9	4.5	27.0	5.5	---	---	---
			MWS150L44	KAL-015E	9.9	55.0	10.9	6.6	50.0	7.6	---	---	---
			MWS200L44	3AB-031E	---	---	---	14.2	82.0	15.2	---	---	---
T I C	LOW TEMP 22	MWS250L44	EAV-020E	14.7	102.0	15.7	7.4	50.0	8.4	---	---	---	
		MWS300L44	LAH-032E*	16.7	105.0	*17.7	12.8	112.0	13.8	8.6	45.0	9.1	
		MWS050L22	KAN-0050	3.6	24.0	4.6	---	---	---	---	---	---	
		MWS075L22	KAM-0075	5.6	36.0	6.6	3.2	19.9	4.2	---	---	---	
		MWS100L22	KAJ-0100	6.9	40.0	7.9	4.5	27.0	5.5	---	---	---	
		MWS200L22	KAK-0200	10.6	55.0	11.6	6.8	50.0	7.8	---	---	---	
		MWS201L22	EAD-0200*	8.4	58.0	*9.4	6.8	46.0	7.8	---	---	---	
D I S C U S	404A	MWS202L22	EAV-0200	12.4	57.2	13.4	7.4	50.0	8.4	---	---	---	
		MWS300L22	LAH-0310*	16.6	93.0	*17.6	10.7	82.0	11.7	---	---	---	
		MWD500M44	2DD-050E	---	---	---	22.3	120.0	23.3	10.5	60.0	11.0	
		MWD300L44	2DF-030E	---	---	---	16.8	102.0	17.8	8.1	52.0	8.6	
	LOW TEMP 404A	MWD400L44	2DL-040E	---	---	---	26.3	161.0	27.3	10.2	60.0	10.7	
		MWD500L44	2DA-060E	---	---	---	28.8	161.0	29.8	10.2	60.0	10.7	
LOW TEMP 22	MWD500H22	2DD-0500	---	---	---	22.3	120.0	23.3	10.5	60.0	11.0		
	MWD300L22	2DF-0300	---	---	---	16.8	102.0	17.8	8.1	52.0	8.6		
	MWD400L22	2DL-0400	---	---	---	26.3	161.0	27.3	10.2	60.0	10.7		
	MWD500L22	2DA-0600	---	---	---	28.8	161.0	29.8	10.2	60.0	10.7		

\* Models are not available for 208/1 V. applications.

\*\* Total Unit Amps includes approximate allowance for control circuit as follows: 1.0A - 208/230V; 0.5A - 460V.

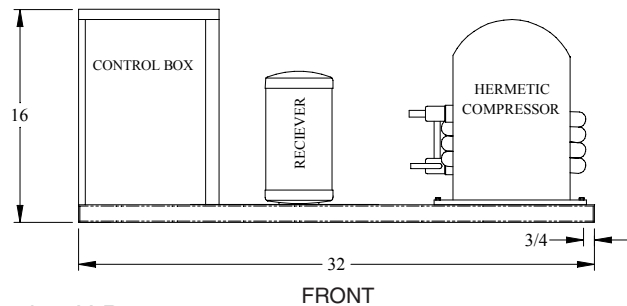
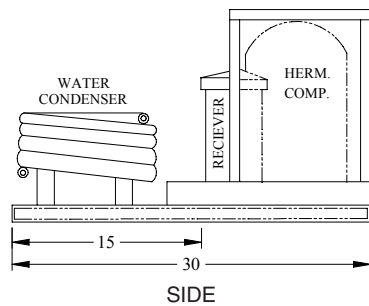
## PHYSICAL DATA

MODEL NUMBER	RECVR. CAP @ 90%	CONNECTIONS (IN)			SHIP WT. (lbs.)
		LIQ. ODS	SUCT. ODS	WATER ODS	

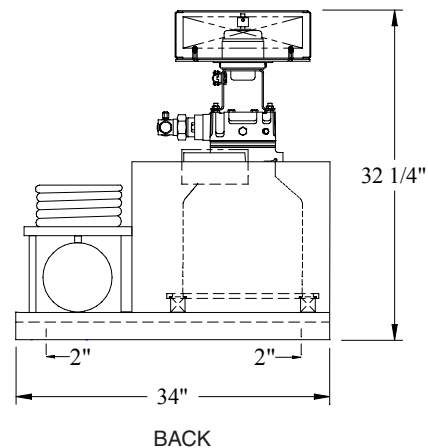
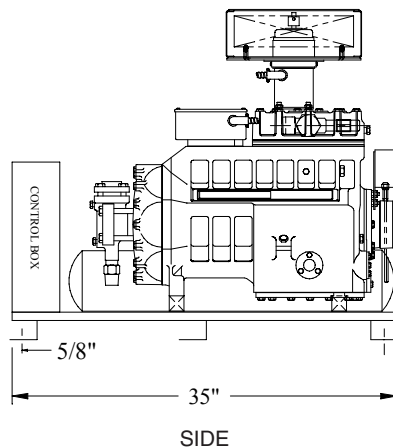
### SEMI-HERMETIC COMPRESSOR

MWS050M44	5.1	3/8	5/8	1/2	150
MWS100M44	5.1	3/8	5/8	1/2	170
MWS200M44	8.6	3/8	7/8	5/8	240
MWS300M44	16.8	1/2	1-1/8	7/8	430
MWS400M44	24.3	1/2	1-1/8	7/8	500
MWS050L44	5.1	3/8	5/8	1/2	150
MWS075L44	5.1	3/8	5/8	1/2	160
MWS100L44	5.1	3/8	5/8	1/2	170
MWS150L44	8.6	3/8	7/8	1/2	200
MWS200L44	8.6	3/8	7/8	1/2	240
MWS250L44	16.8	1/2	1-1/8	5/8	400
MWS300L44	16.8	1/2	1-1/8	5/8	430
MWS050H22	6.0	3/8	5/8	1/2	150
MWS075H22	6.0	3/8	5/8	1/2	160
MWS100H22	6.0	3/8	5/8	1/2	170
MWS150H22	10.0	3/8	7/8	5/8	200
MWS200H22	10.0	3/8	7/8	5/8	240
MWS300H22	19.6	1/2	1-1/8	7/8	430
MWS400H22	28.2	1/2	1-1/8	7/8	500
MWS400M22	28.2	1/2	1-1/8	7/8	500
MWS500H22	28.2	1/2	1-1/8	7/8	520
MWS500M22	28.2	1/2	1-1/8	7/8	520
MWS050L22	6.0	3/8	5/8	1/2	150
MWS075L22	6.0	3/8	5/8	1/2	160
MWS100L22	6.0	3/8	5/8	1/2	170
MWS200L22	10.0	3/8	7/8	1/2	240
MWS201L22	10.0	3/8	7/8	1/2	240
MWS202L22	10.0	3/8	7/8	1/2	240
MWS300L22	19.6	1/2	1-1/8	5/8	430

## DIMENSIONAL DATA



1/2 through 2 H.P.



3 through 6 H.P.

MODEL NUMBER	RECVR. CAP @ 90%	CONNECTIONS (IN)			SHIP WT. (lbs.)
		LIQ. ODS	SUCT. ODS	WATER ODS	

### HERMETIC COMPRESSOR

MWH050M44	5.1	3/8	5/8	1/2	105
MWH075M44	5.1	3/8	5/8	1/2	110
MWH101M44	5.1	3/8	5/8	1/2	115
MWH150M44	8.6	3/8	7/8	1/2	140
MWH201M44	8.6	3/8	7/8	5/8	160
MWH300M44	16.8	1/2	1-1/8	7/8	330
MWH400M44	24.3	1/2	1-1/8	7/8	340
MWH500M44	24.3	1/2	1-1/8	7/8	360
MWH050L44	5.1	3/8	5/8	1/2	105
MWH075L44	5.1	3/8	5/8	1/2	110
MWH100L44	5.1	3/8	5/8	1/2	115
MWH150L44	8.6	3/8	7/8	1/2	140
MWH200L44	8.6	3/8	7/8	1/2	160
MWH300L44	16.8	1/2	1-1/8	5/8	350
MWH050H22	6.0	3/8	5/8	1/2	105
MWH075H22	6.0	3/8	5/8	1/2	110
MWH100H22	6.0	3/8	5/8	1/2	115
MWH150H22	10.0	3/8	7/8	5/8	170
MWH200H22	10.0	3/8	7/8	5/8	190
MWH300H22	19.6	1/2	7/8	7/8	330
MWH400H22	28.2	1/2	7/8	7/8	340
MWH500H22	28.2	1/2	7/8	7/8	360

### DISCUS COMPRESSOR

MWD500M44	24.3	1/2	1-1/8	7/8	540
MWD300L44	16.8	1/2	1-1/8	7/8	510
MWD400L44	24.3	1/2	1-1/8	7/8	525
WMD500L44	24.3	1/2	1-1/8	7/8	540
MWD500H22	28.2	1/2	1-1/8	7/8	540
MWD300L22	19.6	1/2	1-1/8	3/4	510
MWD400L22	28.2	1/2	1-1/8	7/8	525
MWD500L22	28.2	1/2	1-1/8	7/8	540