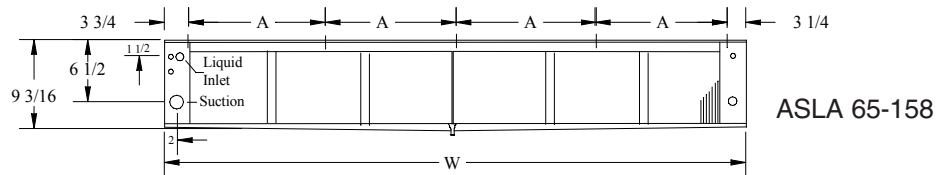
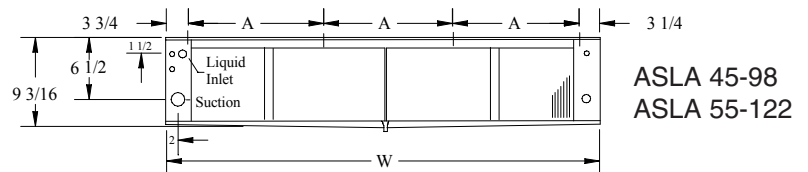
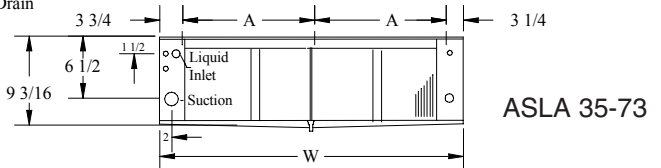
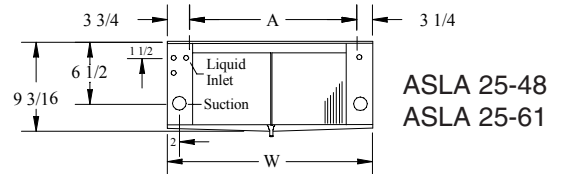
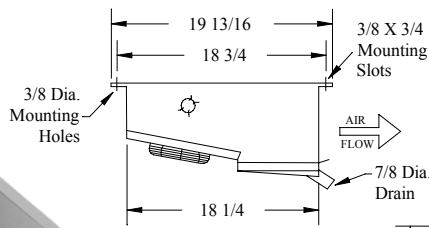


Slim-Temp Display Case Unit Cooler

Publication No. H113.0a
September, 2000

The **ASLA** is the only product on the market that is specifically designed for use in reach-in coolers. This product line offers 6 models which are available in air or electric defrost configurations.



SPECIFICATIONS — Air Defrost Models

Model Number	BTUH @ 10° TD	Fan Motors	CFM	Motor Amps	
				115/1	230/1
ASLA 25-48	4,800	2-16 watt	950	2.2	1.1
ASLA 25-61	6,400	2-16 watt	1,000	2.2	1.1
ASLA 35-73	7,300	3-16 watt	1,425	3.3	1.7
ASLA 45-98	9,800	4-16 watt	1,900	4.4	2.2
ASLA 55-122	12,200	5-16 watt	2,375	5.5	2.8
ASLA 65-158	15,800	6-16 watt	2,850	6.6	3.3

Connections		Dimension*		Ship Wt. (Lbs)
Liquid	Suction	A	W	
1/2 FN	7/8 ODS	39	46-3/16	83
1/2 FN	7/8 ODS	49	56-3/16	105
1/2 FN	7/8 ODS	31	69-3/16	125
1/2 FN	1-1/8 ODS	28 1/4	92-3/16	151
1/2 FN	1-1/8 ODS	36	115-3/16	185
1/2 FN	1-1/8 ODS	32 3/4	138-3/16	222

* All dimensions are in inches.

- All models require externally equalized Thermostatic Expansion valves.
- ASLA capacity ratings at +25°F evaporator temperature.
- All Aluminum low silhouette housing.
- Fan motors are totally enclosed, permanently lubricated and thermally protected.
- Electrical connection made at internal terminal blocks located at end opposite refrigerant connections.
- UL & cUL listed. NSF approved.

Due to continuing product development, specifications subject to change without notice.